

KING CONSERVATION DISTRICT

# **Managing Wildfire Risk for Our Western Washington Homes**



Local Food  
Healthy Forests  
Clean Water  
Better Ground







# Today's Outline

- King Conservation District Wildfire Services\
- Western Washington Wildfire Patterns
- Fire behavior
- Defensible Space
- Evacuation Plan







Local Food, Healthy Forests, Clean Water









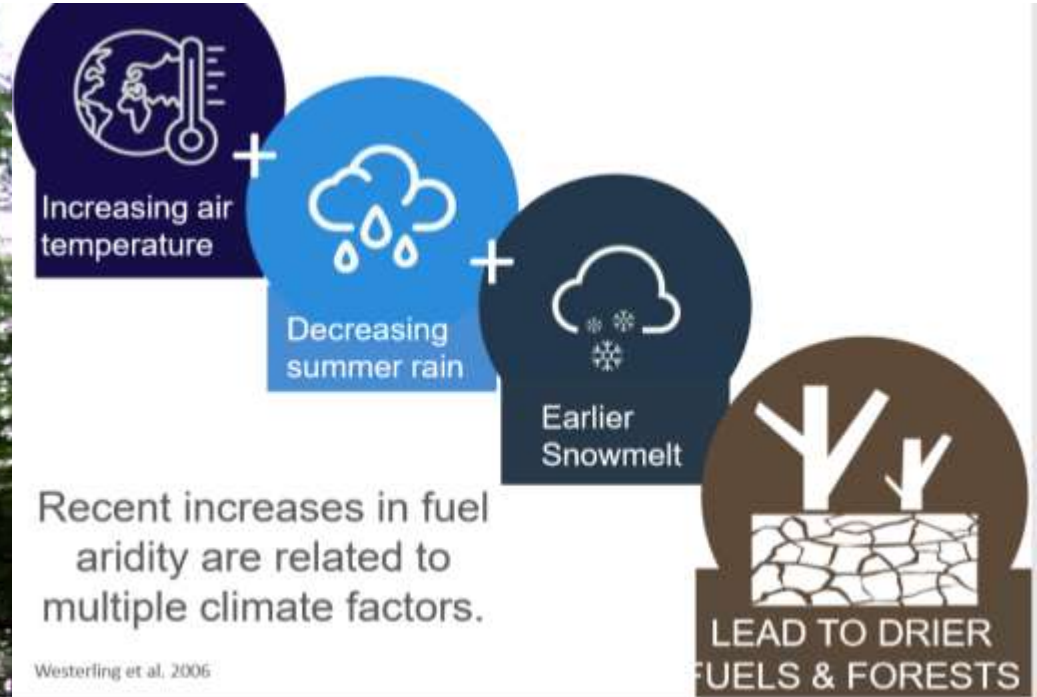










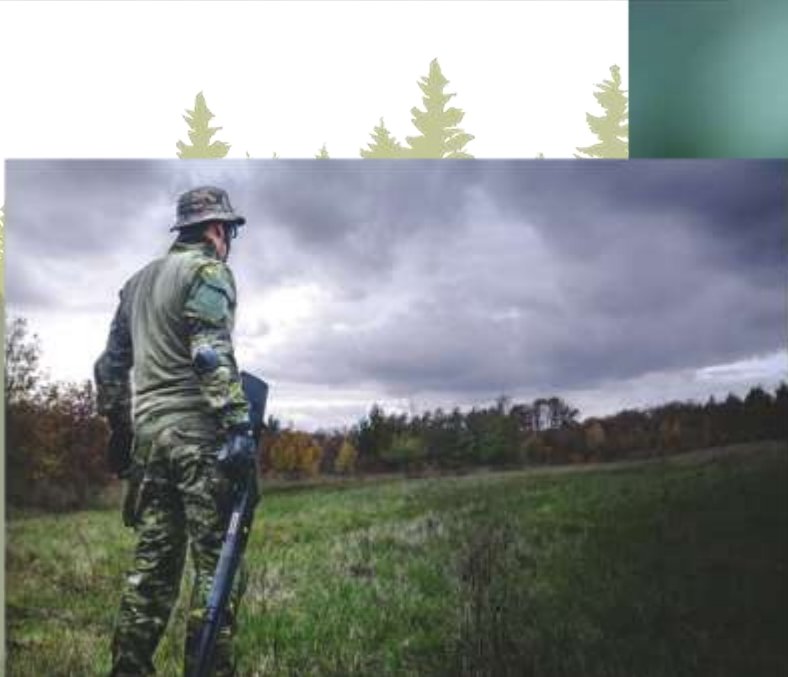




# 90%

**Fires  
Human-caused  
Western WA**

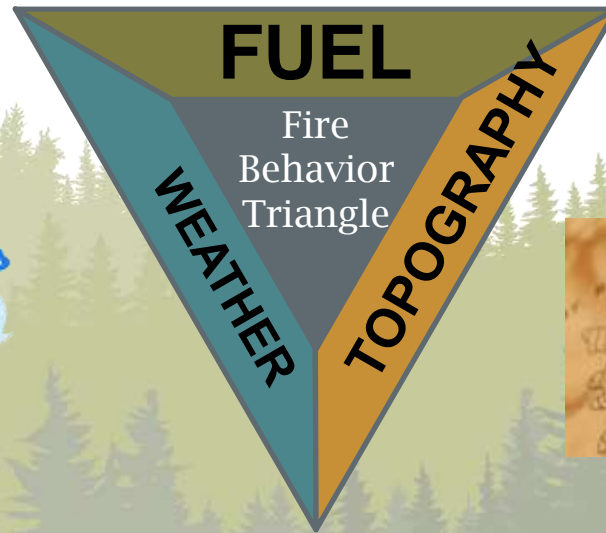
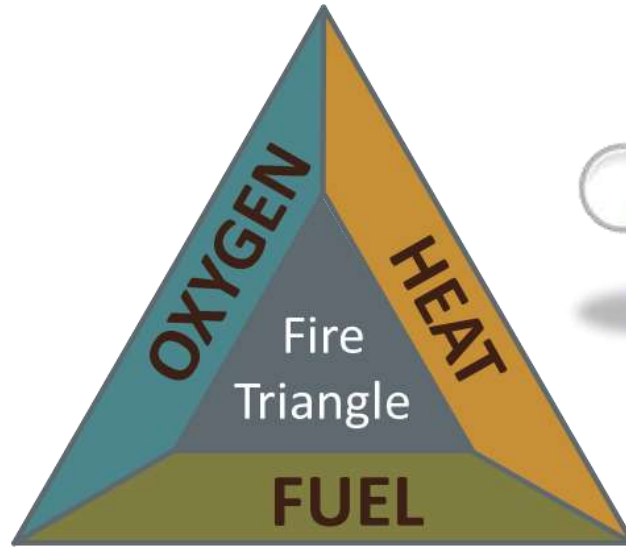


















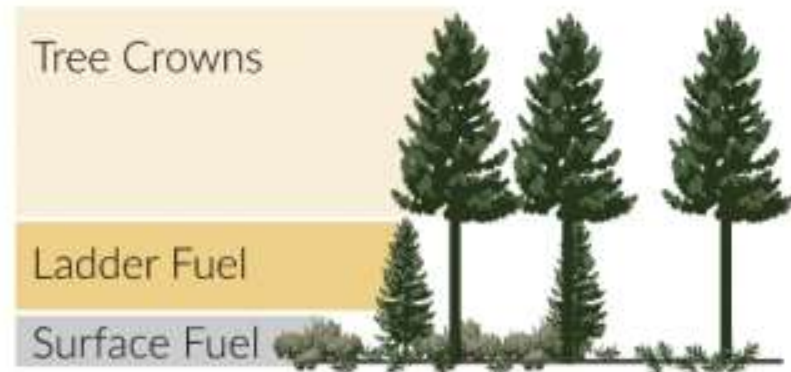




## BEFORE FUEL REDUCTION

### Forest before fuel reduction

Surface and ladder fuels are present.



### Higher intensity fire

Fire spreads from forest surface through ladder fuels to tree crowns.



### Higher severity fire

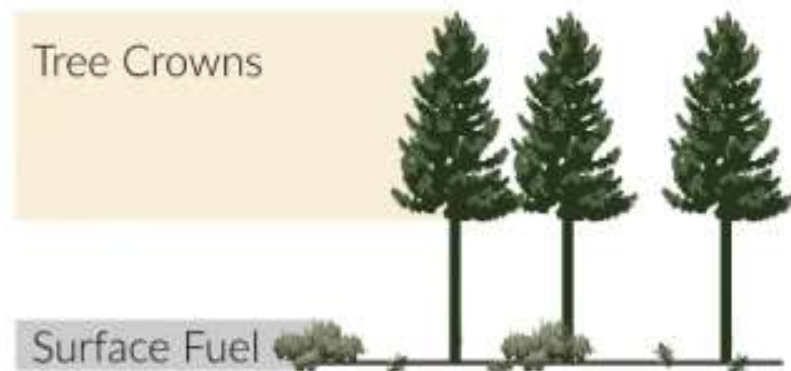
Fire spreads through tree crowns and forest is more damaged by fire.



## AFTER FUEL REDUCTION

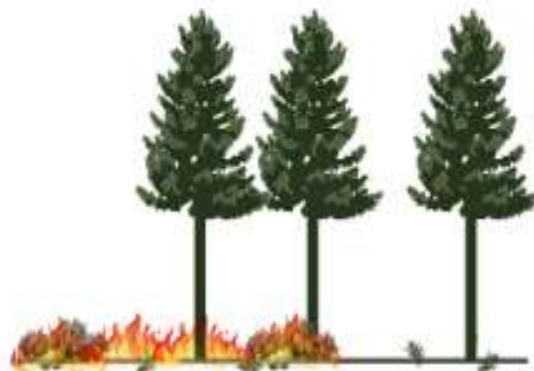
### Forest after fuel reduction

Surface and ladder fuels are reduced.



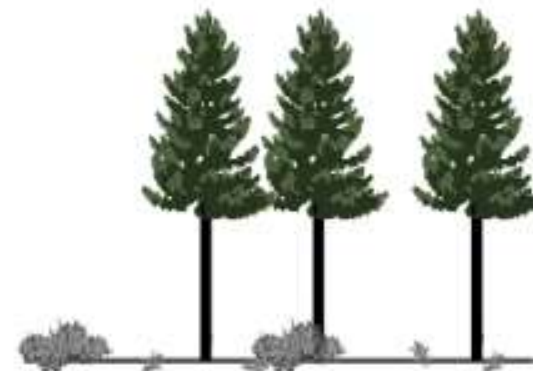
### Lower intensity fire

Fire less likely to rise to tree crowns.



### Lower severity fire

Forest is less damaged by fire.







# Home Ignition Sources







# Wildfire Defensible Space

## Home Ignition Zones (HIZ)

- **Zone 1: The Immediate Zone**  
(0-5 feet)  
High Maintenance - High Impact
- **Zone 2: Intermediate Zone**  
(5-30 feet)  
High Maintenance - High Impact
- **Zone 3: Extended Zone**  
(30-100 feet)  
Low Maintenance





*Cut and remove  
branches that  
hang over roof.*

**Zone 1**  
0' - 5'

**Zone 2**  
5' - 30'

**Zone 3**  
 $\geq 30'$

**Home  
Protection  
Zone**

15'  
(or 1/3 tree height)













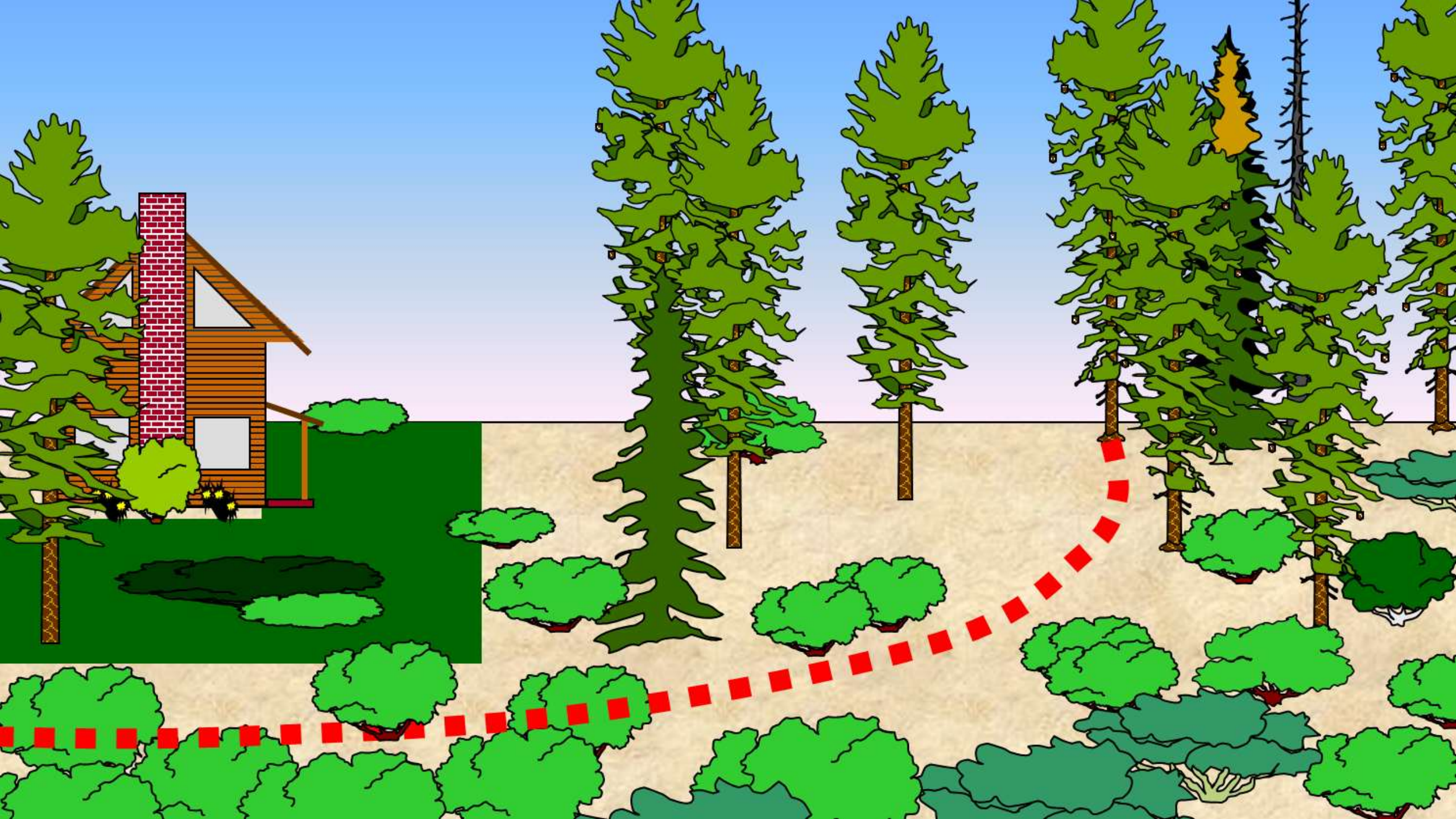










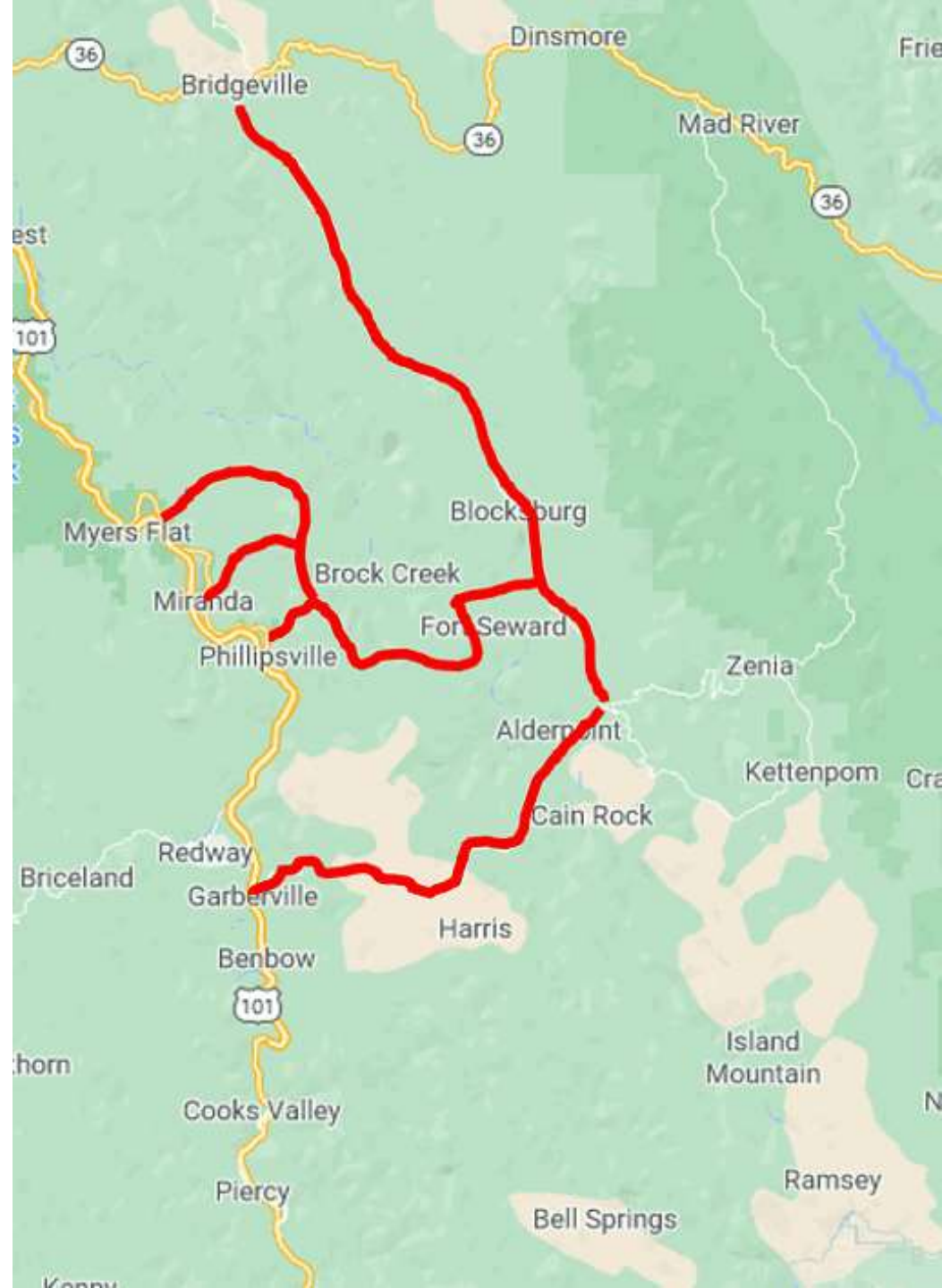






# **Emergency Evacuation Plan**







# In Summary

- King Conservation District Wildfire Services
- Fire behavior
- Defensible Space
- Evacuation Plan





A photograph of a tree trunk in a forest. A bicycle wheel with a black tire and yellow spokes is leaning against the left side of the trunk. A scythe with a curved blade and a wooden handle is leaning against the right side of the trunk. The word "Questions?" is written in white text across the middle of the image.

Questions?



# Thank You

Matthew Axe, Wildfire and Forest Resiliency Coordinator  
425-773-5060 or *[matthew.axe@kingcd.org](mailto:matthew.axe@kingcd.org)*



Local Food  
Healthy Forests  
Clean Water  
Better Ground