

Lake Margaret Water System Status Summary

LMCPC Annual Meeting

6-June-2020



Water System Highlights

Below are the key occurrences since 2019 annual meeting:

- Our water system has exited the lead water Treatment Technique Violation (TTV) in Q4 2019.
- In December 2019, LMCPC completed submission of replacement water tank technical documentation to King County for permitting.
- Washington DOH approved the design of the replacement water tank in February.
- Water service has not been impacted by the current Covid-19 pandemic situation.



Water TTV

- The low pH in Q3 2016 was the cause for our recent water Treatment Technique Violation (TTV) for Lead from the Washington DOH.
- The pH delivered to the residents has been consistently above 7.8 since June 2018, after the installation of the soda ash system. The copper & lead plumbing in the residents' homes has "passivated", or developed a protective layer to keep lead & copper from leaching out into the water.
- **We officially exited the TTV in Q4 2019.**
- Official DOH compliance lead & copper testing of Lake Margaret homes is currently underway, and will be completed in June 2020.
- Per DOH rules, we will need to repeat successful compliance testing in June 2021, and then we will be back on our DOH compliance testing "once every 3 years" schedule.



A Few Notes on Covid-19

Per our April 2020 newsletter, we would like to reiterate some Covid-19 information related to your water system. The LMPC Board would like to reassure you about three simple facts:

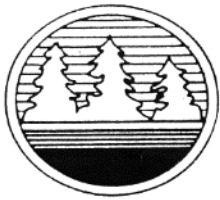
- 1. Your water is safe to drink.** LMPC follows strict drinking water regulations that have been established to prevent waterborne pathogens, such as a virus like COVID-19, from contaminating our drinking water. In fact, our fairly unique water treatment plant uses ozone as the primary disinfectant (many times more effective & faster than chlorine), then utilizes an ultraviolet sanitation step, and finally a chlorine residual is maintained at all times during water storage and distribution. This has not changed.
- 2. We will continue to deliver safe water to you.** LMPC has plans in place for handling emergencies of this type, and has conducted exercises to prepare itself for a variety of events. We have also implemented a Continuity of Operations plans to ensure our operations can continue in an emergency, as multiple board members can now run the basic day-to-day operations of the plant.
- 3. We will assist you in this time of crisis.** We know the response to COVID-19 may lead to economic hardships. That's why LMPC has suspended all water shut-offs due to delinquent payments to ensure all customers have access to this vital resource.

Residents who are concerned about being able to pay a bill, or may know of a neighbor who may be in this situation, should contact the LMPC board. This information will be held in strict confidentiality.



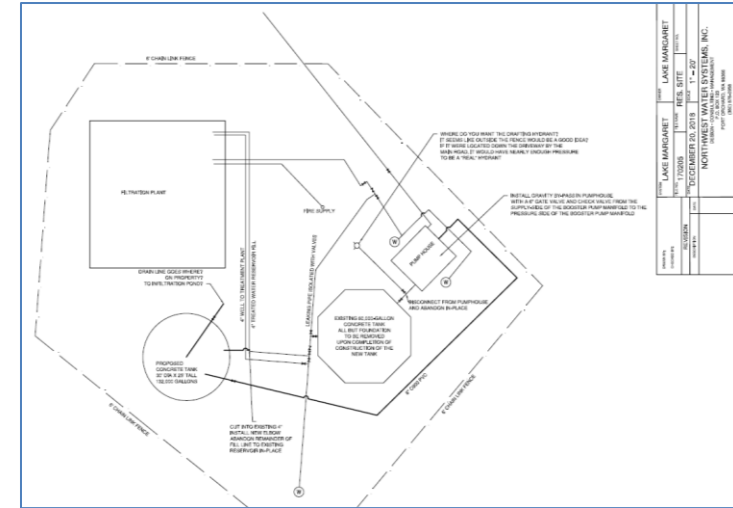
Replacement Water Tank Status

- In December 2019, LMPC completed submission of all required water tank replacement technical documentation to King County for permitting.
- The 3-week public commenting phase ended in late January, with no issues or comments.
- Washington DOH approved the design of the replacement water tank in February.
- In February, LMPC provided additional information to King County, per their requests.
 - We have passed Engineering Review, Clearing & Grading Review, Plans Examination Review, Fire Flow/Access Review.
 - We just passed the Landscape Review in May.
 - The Zoning Review (structure placement, use, parking) is underway and should complete in mid-June.
 - Critical Areas Review, with site visit by an ecologist, should complete in mid-June.
 - The Building Plan Review is in process and is due to complete in June.
- There have been SIGNIFICANT delays in getting approvals from King County. This has been exacerbated by our “strange new world” of Covid-19 changes and restrictions to normal means of working.
- The only time that King County has provided an estimate to complete was on Friday 29-May, to which they said it should complete in June 2020.



Water Tank Plans

- LMCPD has started logistical conversations with our engineer at Northwest Water Systems, and the tank contractor Baker Silo.
- We are working on lining up the contractor to install the underground piping, to be ready to go as soon as the Building Permit is completed.
- The tank will take about 4 weeks to construct once it is started, and will look much like the one pictured here.
- Of note, this 25' tall tank will not be visible from the roadways.





Sketched view of New Water Tank from Treatment Plant parking lot



The new water tank is sketched in blue here, in it's approximate location and to scale.

NOTE: This is the only view from outside of the plant fence line where the new water tank can be seen, excepting from the backyards of some directly neighboring homes.



Water Systems Overview

- Water system has been running well overall.
- We have already seen our first 2020 algae bloom.
- For the budget year ending April 1, only \$1,389 out of a \$35,500 (3.9%) water system capital improvement budget was spent.
 - Driven by need to delay treatment plant roof replacement until completion of water tank.
 - Money has been shifted to 2020-21 budget, and new roof planned for completion in the fall.
- Additional funding allocated to the replacement of the sliding roof doors for the sand filter chambers, during roof replacement. Significant deterioration of the wood is driving this need. Will be replaced with rot-resistant materials.
- Next year's focus will be on the manganese issues and further treatment plant updates.





New Floating Dock at Swim Lot



Old Dock



New Dock



- The ancient floating dock at the swim lot has been decimated by critters and age.
- It has been replaced with a completely new construction by a new resident, Daniel Huerne, who donated his time to do the work.
- A donation drive being run by Sue Beauvais is well on it's way to covering the ~\$1,500 cost of materials.



Questions & Answers